

# Socket CompactFlash Scan Card 5M



## Turn Your Pocket PC, Handheld PC, Pen Tablet or Notebook into a **Mid-Range** Mobile Bar Code Scanner

If you're a mobile professional using a Pocket PC, Handheld PC or Windows notebook for an application requiring Mid-Range data entry, Socket's CompactFlash (CF) Scan Card 5M may provide an incredible increase in productivity.

Virtual keyboards and handwriting/voice recognition are slow, error-prone methods of entering data into mobile computers. If the data to be entered is bar coded, using a laser scanner is 50 times faster and 10,000 times more accurate than manual data entry.

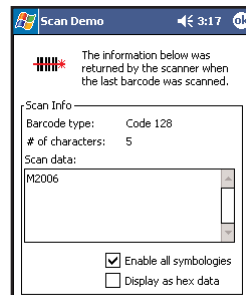
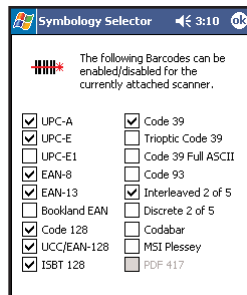
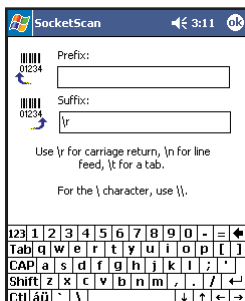


Socket's CF Scan Card 5M brings a new level of convenience and portability to mobile data collection by combining Socket's Mobility Friendly™ CompactFlash technology with the world's smallest and lightest laser scanner engine from Symbol Technologies. Just plug the card into your Windows-based mobile computer, launch the included SocketScan™ software, and read bar code data into any Windows application as if it had been typed on a keyboard. "Fuzzy logic" technology enables the reading of damaged, poor quality or hard-to-read bar codes.



## Mobility Friendly Means Low Power

Socket designed the Mobility Friendly CF Scan Card to use minimal power. Drawing only 4 mA (13 mW) in idle mode, the CF Scan Card lets you operate for hours without having to replace or recharge your mobile computer's batteries.



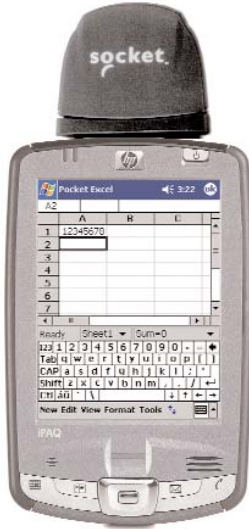
## FEATURES

- Type II CF card with integrated laser scanner plugs into Type II CompactFlash slot of a Pocket PC or mobile computer
- With CompactFlash-to-PC Card adapter (SKU# AC4001-515), works in PC Card (PCMCIA) slot of devices mentioned above (if applicable) or a Windows XP notebook\*
- One-handed operation with a Pocket PC or mobile computer improves efficiency
- Uses state-of-the-art Class 1 824 laser scanner engine from Symbol Technologies. This is the smallest laser scan engine available today
- "Fuzzy logic" enables the reading of damaged, poor quality, and hard-to-read bar codes
- SocketScan keyboard emulation software works on Windows Mobile for HPC 2000 or Pocket PCs as well as Windows XP
- SocketScan allows the user to add Prefix and/or Suffix functions, such as Carriage Return and Tab, to further eliminate manual keystrokes
- SocketScan enables you to assign a scanner trigger button, and also a beep tone or .WAV file to signify a successful scan
- Any of 18 bar code symbologies can be easily enabled/disabled with SocketScan's "Symbology Selector"
- SocketScan "Scan Demo" reports symbology, length and decoded data (in ASCII or Hex) of any scanned bar code (of 19 supported symbologies)
- Two year warranty
- No extra batteries or special power adapter required — the ISC gets power from the mobile computer
- Works with Windows-based development tools so you can easily create custom applications
- SDK available to application developers



# Socket CompactFlash Scan Card 5M

Product # IS5025-609



## SPECIFICATIONS

### Physical Characteristics:

**CF Card Size:** 43 x 43 x 5 mm  
**Scanner Head Size:** 83 x 51 x 20 mm  
**Total Mass:** approx. 34 g

### Power Consumption (with 3.3V):

**Idle:** 4 mA (13 mW)  
**Scanning:** 135 mA (446 mW)  
 (Also operates on 5V supply)

### Bar Code Symbologies Decoded:

Code 39, UPC/EAN/JAN, MSI,  
 Code 128, Code 93, Codabar,  
 Interleaved 2 of 5, Discrete 2 of 5,  
 RSS-14, RSS-Limited/Expanded  
 Stacked

### Operating System Support:

- Windows Mobile for Pocket PC  
 2000/2002/2003 and HPC 2000  
 - Windows XP

### Compatibility: Windows COM Port

### Class 1 Decode Distances:

2.2 to 30+ inches (depending on  
 symbol size, symbology, label  
 media, W-N Ratio, and scan angle)

### Environmental Conditions:

**Operating Temp:**  
 -4° to 131° F (-20° to 55° C)  
**Storage Temperature:**  
 -40° to 140° F (-40° to 60° C)  
**Humidity:** 5-95% non-condensing

**Warranty:** Two years

### Certification:

**FCC:** Part 15, Class B  
**CE:** EN55024:1998, C-TICK s.182  
 CompactFlash Spec. 2.0

**Laser:** SE 824 Class 1 laser

### Interface Standards:

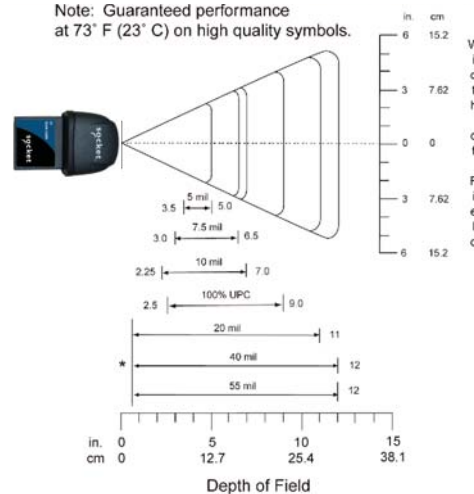
- CompactFlash (CF) Type II  
 - PC Card (PCMCIA) with Type II  
 CF-to-PC Card adapter, available  
 separately: Product # AC4001-515

### SocketScan™ Software:

- Reads bar code data into any Windows application as if manually typed
- Lets you add Prefixes and/or Suffixes (e.g., Carriage Return) to further reduce manual keystrokes
- Lets you assign a beep tone or .WAV file to signify a good scan
- Lets you easily enable/disable any of 18 common symbologies
- Scan Demo reports symbology, length and decoded data (in ASCII or Hex) of any scanned bar code (for 18 supported symbologies)
- SDK available for developers

### Class 1 Laser Decode Zone

Note: Guaranteed performance  
 at 73° F (23° C) on high quality symbols.



\*Minimum distance determined by symbol length and scan angle



VIC COMPUTER (HK) CO., LTD.

域士電腦(香港)有限公司

Website: VIC.HK

EMAIL: Sales@VIC.HK

TEL: (852) 2725 1612

FAX: (852) 2725 0766

© 2005, Socket Communications, Inc. Socket Communications, Socket, CompactFlash Scan Card, SocketScan and Mobility Friendly are registered trademarks or trademarks of Socket Communications, Inc. Microsoft and Windows are either registered trademarks or trademarks of Microsoft Corporation in the United States and/or other countries. All other brand and product names are trademarks of their respective holders.

6450-00042 U 5/2005