



Stream wireless studio

» STREAM Wireless Studio, consisting of STREAM Designer and STREAM Server, accelerates your application development and eases management of a wide range of users, devices, databases, and hosts.

STREAM Designer gives you effective tools to manage: **Database access** by linking to existing databases and creating new ones | **Mainframe access** by configuring

emulator screen templates | **Users** by controlling access to services and applications | **Devices** by customizing settings, including wireless networking and device security, on CipherLab mobile computers.

STREAM Server runs on a wireless network and connects mobile devices to your back-end databases so you can monitor users and database access while they work.

CREATE AND MANAGE SMART, FAST,
EFFECTIVE WIRELESS SOLUTIONS.



Stream

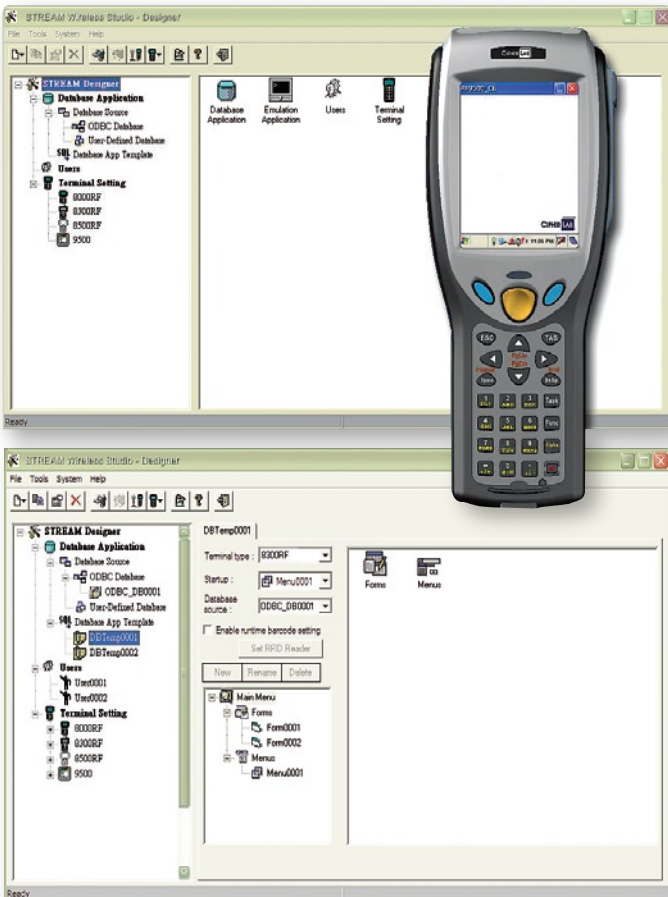
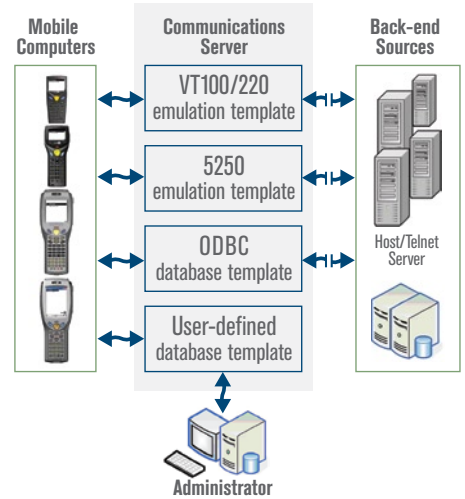
STREAM Wireless Studio integrates all the tools for application development and management.

INTELLIGENCE—BUILT-IN

STREAM's smart architecture takes the difficulty out of developing and managing applications for a complex, heterogeneous infrastructure.

STREAM Wireless Studio is a middleware that links back-end data resources to users and their tasks through menus and forms customized to their log-in profiles. Nothing resides on the mobile computer except the STREAM runtime and the device configuration settings, eliminating time-consuming maintenance of data files, screen templates, and user functions on the mobile device. Changes made to any user, form, or data configuration automatically appears on the mobile computer when the user logs in.

STREAM makes your work simple.



STREAM DESIGNER: LIKE WORKING WITH AN OLD FRIEND—ONLY BETTER

Besides using a familiar windowing interface, STREAM Designer is intuitive and hierarchical. Whether you're developing for client-server or mainframe-terminal environments, or both, STREAM gives you the right tools to help you complete your work quickly. Plus, an integrated device simulator lets you verify your application will work before you deploy it.

EASILY ADAPT TO YOUR CUSTOMERS' NEEDS

STREAM Designer makes it easy to build customized applications. Screen templates, with menus and forms, database links, and user log-ins reside in the STREAM middleware. CipherLab mobile computers access them when a user logs in. When business demands require a change to a template, pull-down menus and other familiar interface methods in STREAM Designer accelerate your work to allow you to quickly implement changes. The new configuration propagates to users instantly, wherever they are.

STREAM SERVER: EASY ACTIVITY MONITORING

STREAM Server provides wireless connectivity and activity monitoring. You can watch who is connected and what databases they're accessing, as well as their activity, to keep you informed and your systems secure.

STREAM BRINGS THE POWER OF YOUR BUSINESS APPLICATIONS INTO THE WAREHOUSE, SHOWROOM, FACTORY—OR THE WINERY. YOUR DATA MANAGEMENT CAN BE AS CLOSE TO THE WORK AS YOUR EMPLOYEES ARE.



THE POWER SUITE
CipherLab Developer Software

STREAM

POWERFUL AND FLEXIBLE

- ▶ Instantly link to multiple, existing back-end data resources or build user-defined databases from the STREAM Designer window
- ▶ Define and manage all users from a single window, mapping each log-in to a user template, database, forms, and menus
- ▶ Powerful options for fields, menus, forms, and data manipulation enable a wide range of control over data acquisition
- ▶ A convenient utility allows you to capture host screens and reformat them to show only the critical information on the mobile device display
- ▶ Create unique configurations for multiple CipherLab devices—user menus, reader configurations, Wi-Fi setup, and more—to easily manage an array of CipherLab computers

WITH THE RIGHT TOOLS AND UP-TO-THE-MINUTE UPDATES, EVERY PART OF YOUR ORGANIZATION IS ABLE TO MAKE SMART, FAST DECISIONS.



EVERYTHING YOU NEED TO DESIGN AND DEPLOY

- ▶ A comprehensive tool set that integrates management of users, devices, and database access in one, easy-to-use application
- ▶ Built-in mobile computer simulator saves time by providing a test bench to accurately test applications before they're deployed

EASY MANAGEABILITY

- ▶ Intelligent architecture—the user log-in automatically maps all user settings, menus, databases, and task functions to the device
- ▶ Quickly build applications using STREAM Designer on your PC and change configurations as often as necessary without redeploying settings to mobile devices

ACCELERATE DELIVERY OF SOLUTIONS

- ▶ Save time by developing new applications quickly in a familiar windowing environment
- ▶ Quickly customize screens and menus for client-driven or host-driven (terminal emulation) environments
- ▶ Download runtime and device settings only once; there's no need to recall the device when you add or change users, screen templates, or databases

CONNECT AND MONITOR

- ▶ Connect mobile computers to your back-end servers with an integrated communications server
- ▶ Monitor user and database activity

STREAM is smart, making your work fast and simple.

CIPHERLAB PRODUCTS ARE VALUED WORLDWIDE FOR ENGINEERING EXCELLENCE. **THE POWERSUITE SERIES** IS ANOTHER EXAMPLE OF TECHNICAL INNOVATION AND QUALITY VALUE FOR TODAY'S AIDC SOLUTIONS.



CIPHERLAB
Stream



CipherLab 9400
and 9500 Series

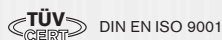


CipherLab 8071,
8300, and 8500 Series

STREAM _ wireless studio

for all CipherLab wireless mobile computers

STREAM Designer: <i>Four integrated functions</i>	All you need to develop, deploy, and manage wireless AIDC solutions using CipherLab mobile computers with Wi-Fi
STREAM Server: <i>Integrated Wi-Fi server application</i>	Monitor and control terminal and database connectivity
Intuitive graphical interface	Develop applications quickly in a windowing environment on your PC—without writing code
Application-level control	Download the runtime and device settings only once and manage all other aspects from the STREAM application window
User-login-driven	Easy manageability—form templates and available databases are mapped to the device based on the user log-in, allowing easy updates from the PC
Powerful database manager	Instantly link to multiple, existing back-end data resources or build new ones right from the STREAM window
Flexible template manager	Quickly build custom screen templates and map to your database with powerful options for fields, menus, forms, and data manipulation
Built-in VT100/220 and TN5250 emulators	Map customized screen templates to multiple mainframe hosts for maximum flexibility and control over users and data acquisition processes
Host screen capture and reformat	Quickly reformat host screens to display only critical information on the CipherLab mobile device
Extensive user manager	Define and manage all users from a single window
Powerful mobile computer manager	Create unique configurations—user menus, reader configurations, Wi-Fi setup, and more—for multiple CipherLab devices to easily manage an array of CipherLab mobile computers
Built-in simulator	Save time by testing your applications before you deploy



©2007 CipherLab Co., Ltd. All specifications are subject to change without notice. All rights reserved.

VIC COMPUTER (HK) CO., LTD.
域士電腦(香港)有限公司

Tel: (852) 8206 1828
Fax: (852) 2725 0766
Email: Sales@VIC.HK
http://VIC.HK